

High Quality and Excellent Ryokan (Onsen) Plan

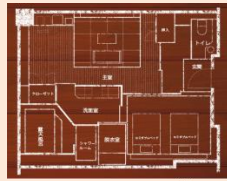
[Non Smoking Room Committed]

Plan code : 宿温高 02GE

《 Noboribetsu ONSEN 》

◇Hotel “MAHOROBA”

[Suite Room with a private open air bath(Source of Hot sulfur springs)]64 m² * breakfast & dinner



	10/1-10/31	11/1-11/30	12/1-12/25	1/4-3/31	4/1-4/19
				4/20-4/27	5/15-5/26
				5/6-5/14	
				5/27-5/31	
2in room	JPY 37,800	JPY 36,000	JPY 36,200	JPY 37,400	JPY 35,900
3in room	JPY 35,400	JPY 34,300	JPY 34,500	JPY 35,100	JPY 34,200
Day before a holiday : JPY1,200 plus					
Except days : 12/26-1/3, 4/28-5/5					

《 Lake Touya ONSEN 》

◇The Lakeview TOYA “NONOKAZE RESORT”

[Nonokaze-club Room with private view spa] 56 m² * breakfast & dinner



	10/1-10/31	11/1-11/30	12/1-12/26	
			1/4-2/6	5/7-5/31
			2/11-4/27	
2in room	JPY 26,900	JPY 25,700	JPY 26,100	JPY 27,200
3in room	JPY 24,600	JPY 23,500	JPY 23,700	JPY 24,900
Day before a holiday : JPY3,500 plus				
Except days : 12/27-1/3, 2/7-2/10, 4/28-5/6				

《 Lake Shikotu ONSEN 》

◇Lake Shikotsu Tsuruga Resort Spa MIZU NO UTA

[Japanese and Western-style Room with a private open air bath] 56 m² * breakfast & dinner

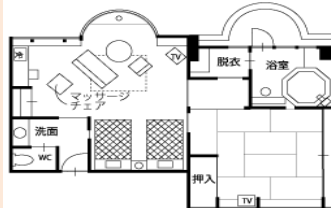


	10/1-10/31	11/1-11/30	12/1-12/25	12/26-12/29
			1/4-1/28	1/29-2/20
			2/21-4/28	
2in room	JPY 33,600	JPY 28,000	JPY 36,400	JPY 39,900
3in room	JPY 28,900	JPY 25,200	JPY 31,800	JPY 35,300
Day before a holiday : JPY2,700 plus				
Except days : 12/30-1/3, 4/29-5/7				

《 Otaru ONSEN 》

◇Ungano Yado Otaru Furukawa (A hotel in a prime location over looking otaru canal)

[Special guest Room on the top floor with a private bath] 69 m² *breakfast & dinner



	10/1-5/31
2guests/room	JPY 47,550
3guests/room	JPY 34,350
4guests/room	JPY 27,550
5guests/room	JPY 23,550
Day before a holiday : No Additional	
Except days : 12/29-1/3, 4/29-5/7	

《 Souunkyo ONSEN 》

◇Hotel Daisetu

YukiHotaru

[Wafu Modern Japanese&Western]

《 Lake Akan ONSEN 》

◇Akan Yuku No Sato Turuga

Bekkan

[Japanese & Western]



	10/1-10/31	11/1-11/30	12/1-12/30	3/6-4/28	4/29-5/2
			1/3-2/4		5/5-5/31
			2/12-3/5		
2 in room	JPY 25,400	JPY 17,700	JPY 19,700	JPY 18,300	JPY 21,400
3 in room	JPY 23,000	JPY 17,700	JPY 18,600	JPY 17,700	JPY 20,300
Day before a holiday : No Additional					
Except days : 12/31-1/24, 2/9-5/4					



	10/1-10/31	11/1-11/30	12/1-12/26	1/4-1/31	2/1-2/6
			4/1-4/22	3/1-3/31	2/13-2/29
				5/5-5/31	4/23-4/29
2 in room	JPY 35,300	JPY 32,500	JPY 31,500	JPY 33,600	JPY 36,000
3 in room	JPY 32,500	JPY 31,400	JPY 31,500	JPY 32,500	JPY 34,900
Day before a holiday : JPY2,500 plus					
Except days : 12/27-1/3, 2/7-2/12, 4/23-5/4					

Contact global@sapporo-concierge.com

URL <http://www.sapporo-concierge.com>